



VANCOUVER
INTERNATIONAL AIRPORT



Vancouver YVR's known as a world-class international airport that consistently receives accolades and awards for its excellence in airport operations, customer service and sustainability. Awarded Best Airport in North America multiple times, by the Skytrax World Airport Awards.

UNIQUE HIGHLIGHTS:

- ▶ CANADA'S 2ND BUSIEST AIRPORT
- ▶ GATEWAY TO THE PACIFIC: YVR serves as a major gateway between North America and the Asia-Pacific region.
- ▶ EASE OF CONNECTIVITY: Rapid transit line connects the airport to downtown Vancouver in about 25 minutes.
- ▶ DIVERSE AIRLINE PARTNERSHIPS: YVR hosts a diverse range of airline partners, serving destinations around the world.
- ▶ FOCUS ON CUSTOMER EXPERIENCE: YVR prioritizes passengers experiences, offering amenities such as lounges, shopping and dining choices.

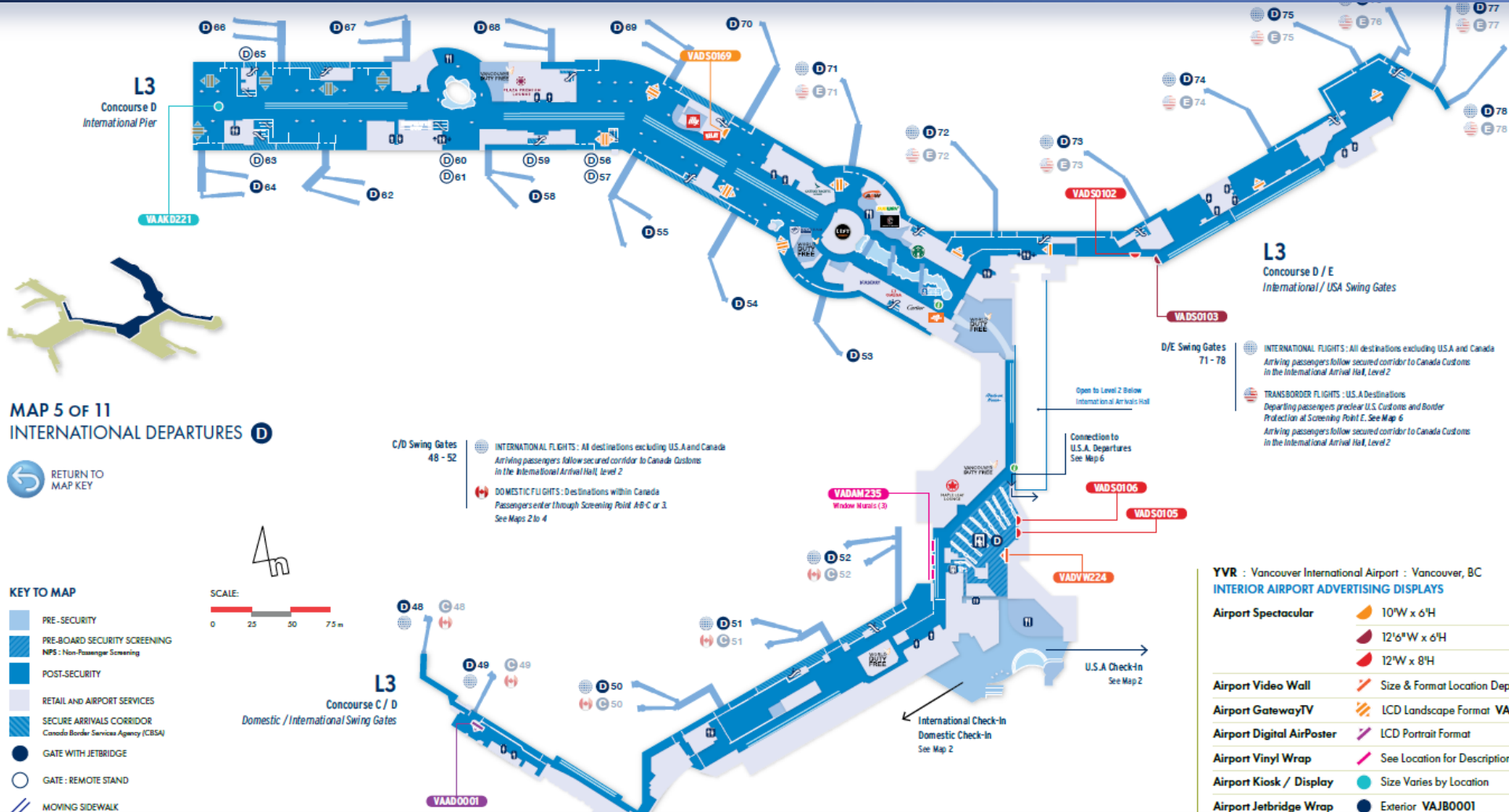
PASSAGERS YVR PASSENGERS (ENPLANED + DEPLANED)							
	Domestic	Transborder	Asian Pacific	Europe	Misc. Int'l	Sub-Total Int'l	Total
2022	10,598,398	4,365,871	1,862,639	1,411,744	774,764	4,049,147	19,013,416
2023	12,812,955	6,047,572	3,379,648	1,572,211	1,125,798	6,077,657	24,938,184



24,938,184
Total number of Passengers in 2023

DEPARTURES
INTERNATIONAL &
TRANSBORDER

INTERNATIONAL DEPARTURES MAP



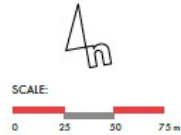
Vancouver International Airport



TRANSBORDER DEPARTURES MAP



MAP 6 OF 11
TRANSBORDER DEPARTURES **E**



KEY TO MAP

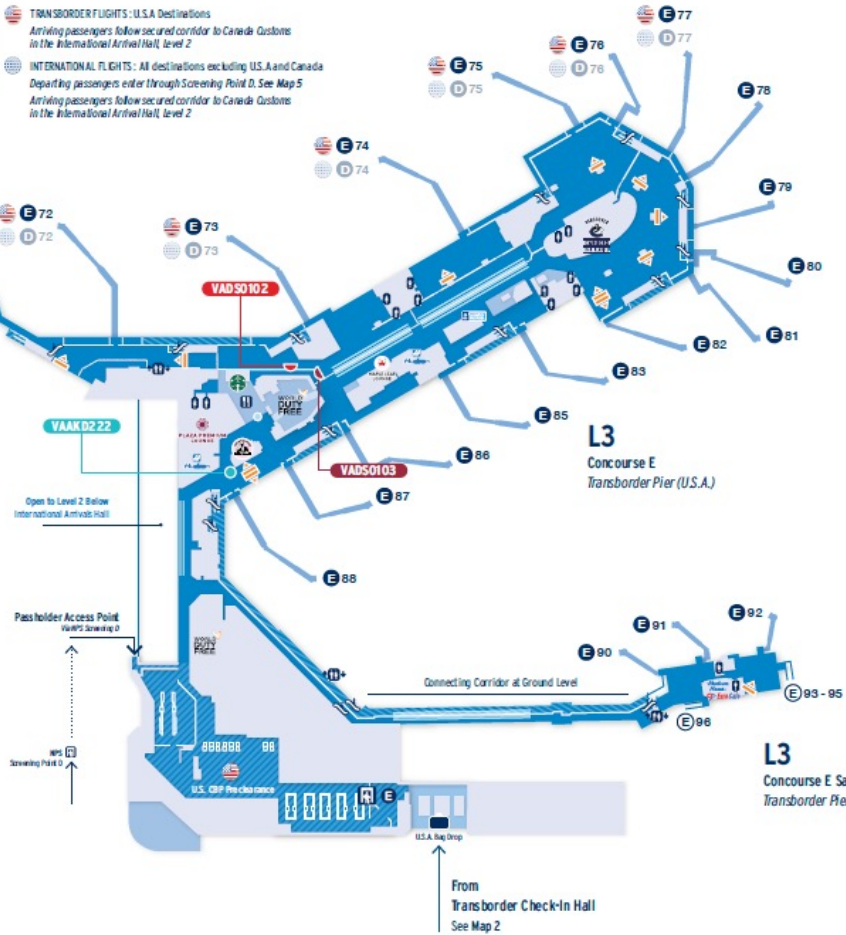
- PRE-SECURITY
- U.S. SECURITY & PRECLEARANCE
U.S. Customs and Border Protection (CBP)
- POST-SECURITY
- RETAIL AND AIRPORT SERVICES
- SECURE ARRIVALS CORRIDOR
Canada Border Services Agency (CBSA)
- GATE WITH JETBRIDGE
- GATE : GROUND LOADING
- MOVING SIDEWALK

D/E Swing Gates 71 - 78

TRANSBORDER FLIGHTS - U.S.A Destinations
Arriving passengers follow secured corridor to Canada Customs in the International Arrival Hall, level 2

INTERNATIONAL FLIGHTS - All destinations excluding U.S.A and Canada
Departing passengers enter through Screening Point D. See Map 5
Arriving passengers follow secured corridor to Canada Customs in the International Arrival Hall, level 2

L3
Concourse E / D
U.S.A. / International Swing Gates



YVR : Vancouver International Airport : Vancouver, BC
INTERIOR AIRPORT ADVERTISING DISPLAYS

Airport Spectacular	12'6"W x 6'H
	12"W x 8'H
Airport GatewayTV	LCD Landscape Format VADG0001
Airport Kiosk / Display	Size Varies by Location
Airport Jetbridge Wrap	Exterior VAJB0001 Interior VAJB0002

DIGITAL VIDEO WALL: Departures: International

This 3x3 Video Wall located at International departures security checkpoint offers high exposure to advertising brand.

All advertising creative displayed must be bilingual with English & French having equal prominence.

Panel: #VADVW224 [Spec. 3925]

Media Rate:
\$9,000 net / 4 weeks / spot

Loop Length: 15 second spot on a 4 minute loop
Static & Video Capable



SPECTACULARS: 8'h x 12'w – Departures: International

Strategically located, these Spectaculars offer a unique opportunity to capture significant attention.

All advertising creative displayed must be bilingual with English & French having equal prominence.

Panel #: VADS0102; VADS0105; VADS0106
[Spec. #3845]

Media Rate:
\$14,000 net / 4 weeks /panel

Est. Production/Install:
\$9,823 net / execution



SPECTACULARS: 6'h x 9'w – Departures: International

This Spectacular offer a unique opportunity to capture significant attention. Located in waiting area for flights going to Asia @ Gate 70.

All advertising creative displayed must be bilingual with English & French having equal prominence.

Panel: #VADS0169 [Spec. #3847]

Media Rate:
\$14,000 net / 4 weeks

Est. Production/Install:
\$3,610 net / execution



SPECTACULARS: 6'h x 12'w – Departures: International

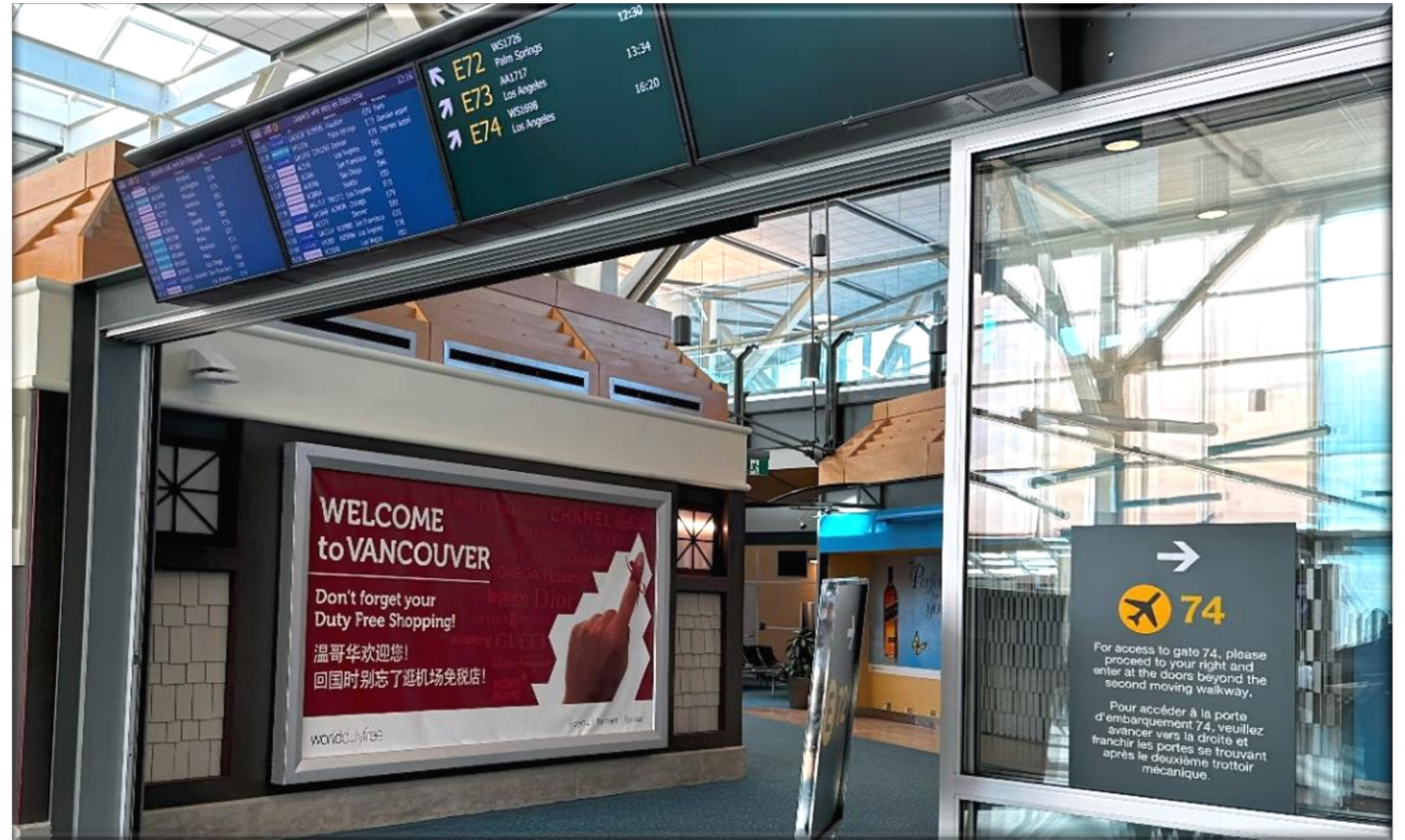
This Spectacular offer a unique opportunity to capture significant attention. Located across from Gate 74 “Duty Free”.

All advertising creative displayed must be bilingual with English & French having equal prominence.

Panel: #VADS0103 [Spec. #3938]

Media Rate:
\$14,000 net / 4 weeks

Est. Production/Install:
\$TBD / execution



ARRIVALS

International & Transborder

INTERNATIONAL & TRANSBORDER ARRIVALS MAP

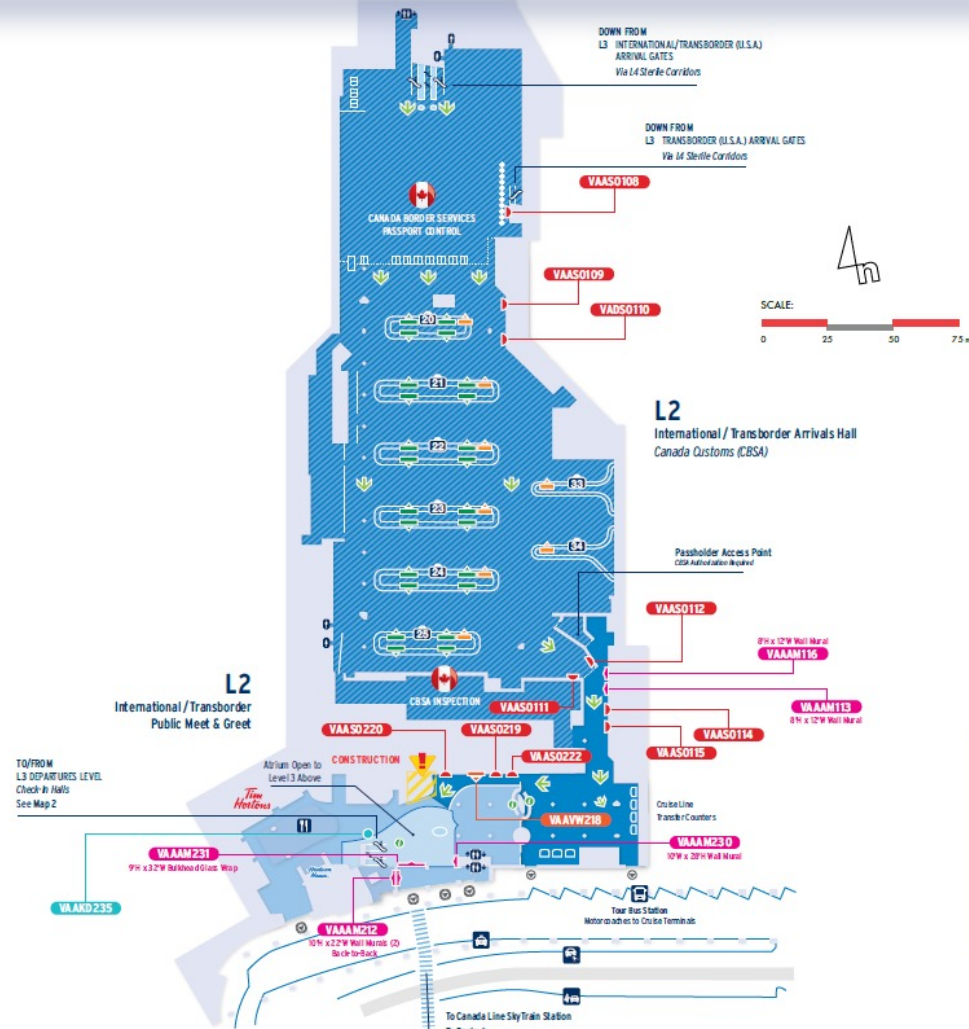


MAP 8 OF 11
INTERNATIONAL AND
TRANSBORDER ARRIVALS



KEY TO MAP

- PUBLIC AREA
- ARRIVING PASSENGERS ONLY
- CANADA CUSTOMS
Canada Border Services Agency (CBSA)
- RETAIL AND AIRPORT SERVICES
- ARRIVING PASSENGERS
- LUGGAGE CAROUSEL
with Number
- DOORS TO OUTSIDE
- TAXI STAND
- RIDE SHARING PICK-UP
- PUBLIC PASSENGER PICK-UP



- YVR : Vancouver International Airport : Vancouver, BC
- INTERIOR AIRPORT ADVERTISING DISPLAYS**
- Airport Spectacular ▶ 12'W x 8'H
 - Airport Video Wall ▶ Size & Format Location Dependent
 - Airport Digital AirPoster ▶ LCD Portrait Format VADCI001
 - Airport GatewayTV ▶ LCD Landscape Format VADG0001
 - Airport Kiosk / Display ▶ Size Varies by Location
 - Airport Vinyl Wrap ▶ See Location for Description

DIGITAL VIDEO WALL: Arrivals: International & Transborder

This 3x3 Digital Video Wall is located in the busy International & Transborder arrivals Meet and Greet zone. (Can be purchased in combination with static spectacular panels).

All advertising creative displayed must be bilingual with English & French having equal prominence.

Panel: #VAAVW218 [Spec. 3925]

Media Rate:
\$9,000 net / 4 weeks / spot

Loop Length: 15 second spot on a 4 minute loop
Static & Video Capable



DIGITAL LUGGAGE CAROUSEL NETWORK: Arrivals: International & Transborder

Unique digital opportunity located at the luggage carousel in International & Transborder Arrivals. Long dwell times offer extended exposure to advertising brands.

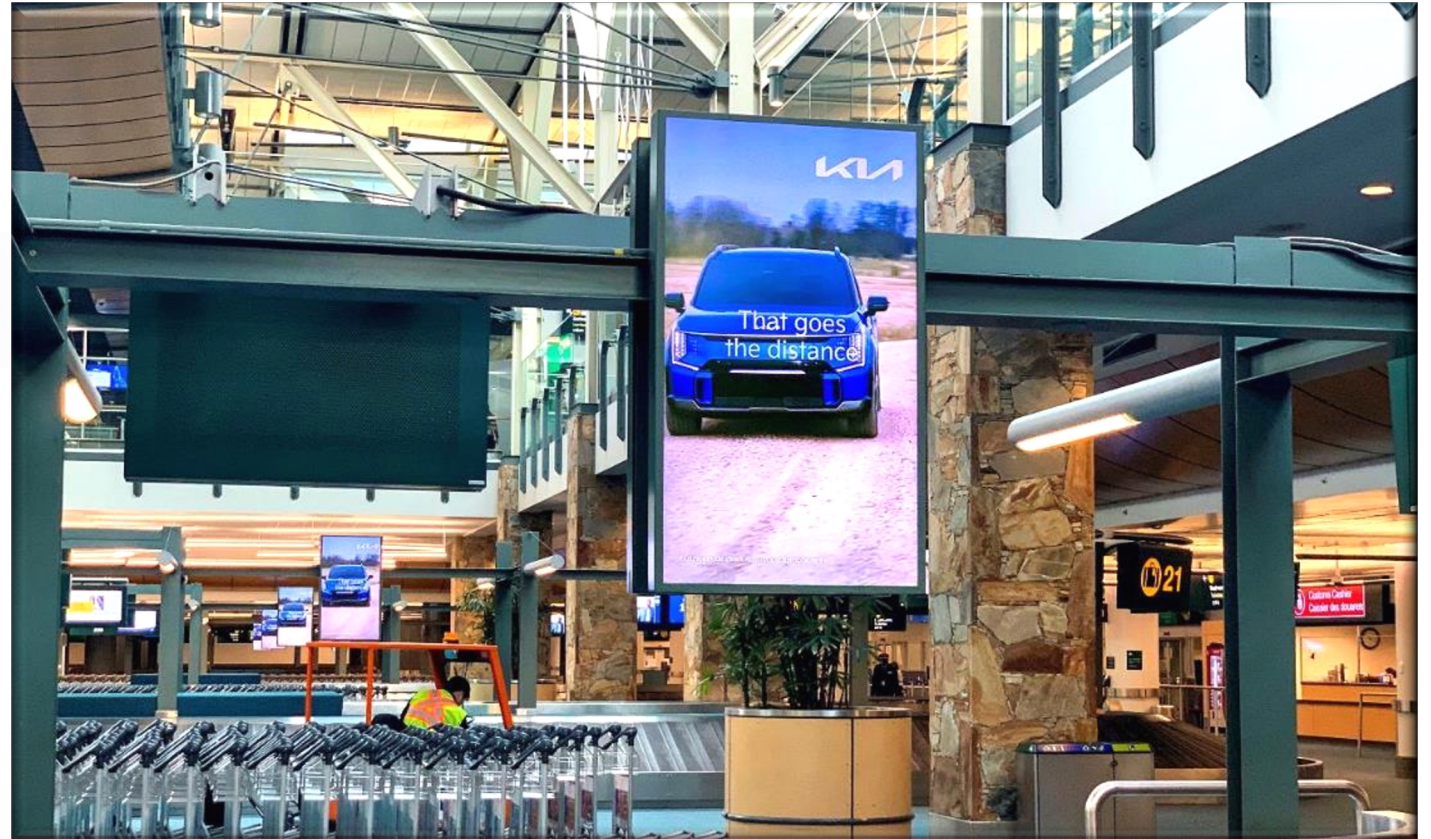
All advertising creative displayed must be bilingual with English & French having equal prominence.

Digital network of 24 faces (12 LCD 55" double-sided units).

Panel: #VADC1001 [Spec. 3924]

Media Rate:
\$18,750 net / 4 weeks / spot on 24 screens

Loop Length: 15 second spot on a 4 minute loop
Static & Video Capable



GLASS WRAP: 9'h x 32'w – Arrivals: International & Transborder

Create a lasting impression with the large Glass Wrap positioned above exit doors in the Pre-Security International & Transborder Arrivals, targeting departing passengers and meet & greet visitors

All advertising creative displayed must be bilingual with English & French having equal prominence.

Panel: #VAAAM231 [Spec. #3879]

Media Rate:
\$40,000 net / 4 weeks

Est. Production/Install:
\$9,980 net / execution



WALL MURALS: 10'h x 22'w (x2) – Arrivals: International & Transborder

Make a lasting impression with this large Double Sided Wall Mural Glass Wrap located in the Pre-Security International & Transborder Arrivals in meet & greet area.

All advertising creative displayed must be bilingual with English & French having equal prominence.

Panel: #VAAS0212 [Spec. #3878]

Media Rate:
\$48,000 net / 4 weeks

Est. Production/Install:
\$8,800 net / execution



WALL MURAL: 28'h x 10'w – Arrivals: International & Transborder

Capture the attention of passengers with this stunning, huge Wall Mural located in the International & Transborder Arrivals in the pre-security 'meet' & 'greet' area.

All advertising creative displayed must be bilingual with English & French having equal prominence.

Panel: #VAAAM230 [Spec. #3848]

Media Rate:
\$48,038 net / 4 weeks

Est. Production/Install:
\$9,903 net / execution



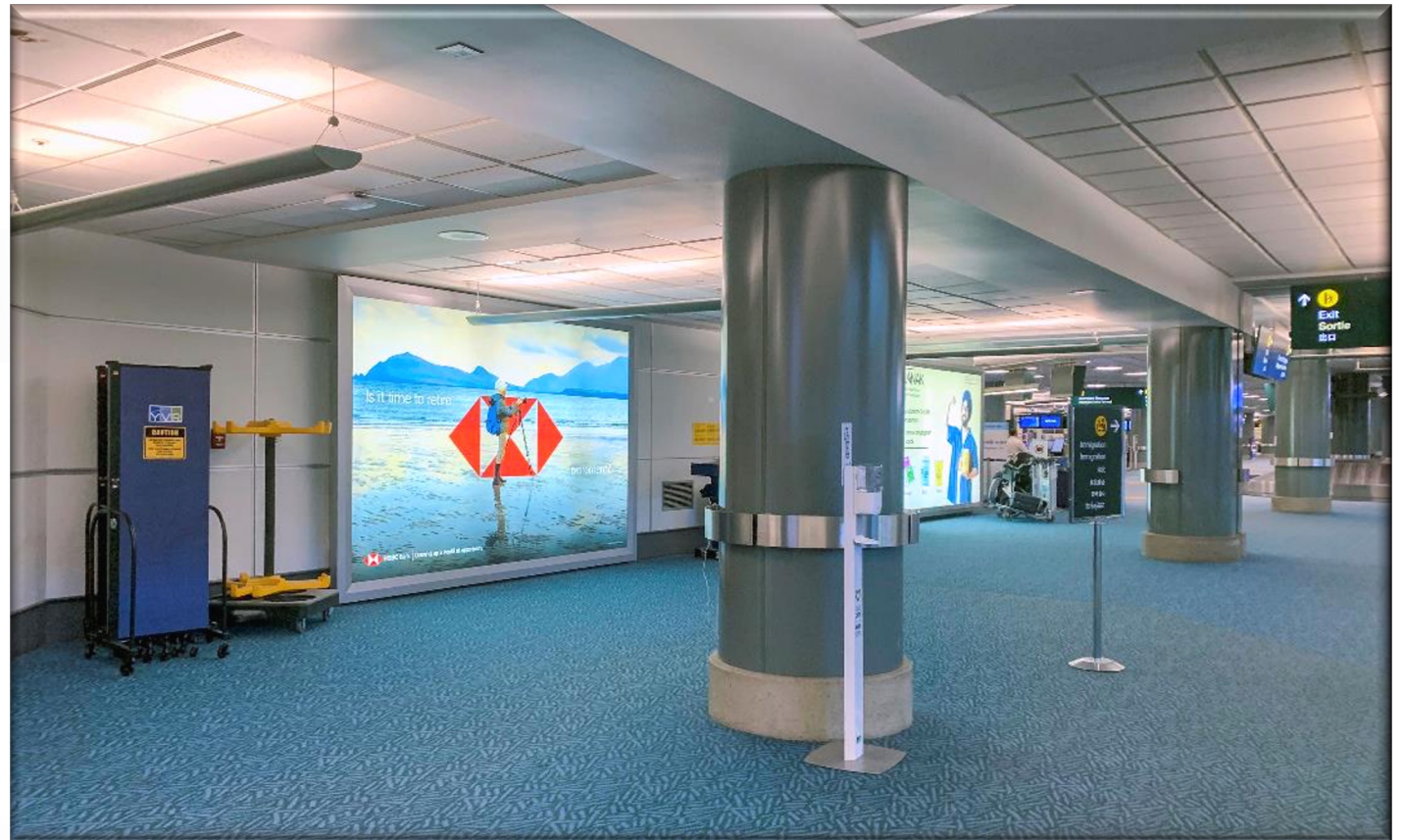
SPECTACULARS: 8'h x 12'w – Arrivals: International & Transborder

Strategically located, these Spectaculars offer a unique opportunity to capture significant attention.

All advertising creative displayed must be bilingual with English & French having equal prominence.

Panel #: VAAS0108; VAAS0109; VADS0110
[Spec. #: 3845]

Media Rate:	Est. Production/Install:
\$14,000 net / 4 weeks / panel	\$2,125 net / execution



SPECTACULARS: 8'h x 12'w – Arrivals: International & Transborder

Strategically located, these Spectaculars offer a unique opportunity to capture significant attention in the Canada Customs bottleneck as all travelers pass through these doors on arrival.

VAAS0112 is Available, VAAS0111 sold long term

All advertising creative displayed must be bilingual with English & French having equal prominence.

Panel #: VAAS0112; VAAS0111
[Spec. #: 3845]

Media Rate:
\$24,000 net / 4 weeks / panel

Est. Production/Install:
\$3,125 net / execution



SPECTACULARS: 8'h x 12'w – Arrivals: International & Transborder

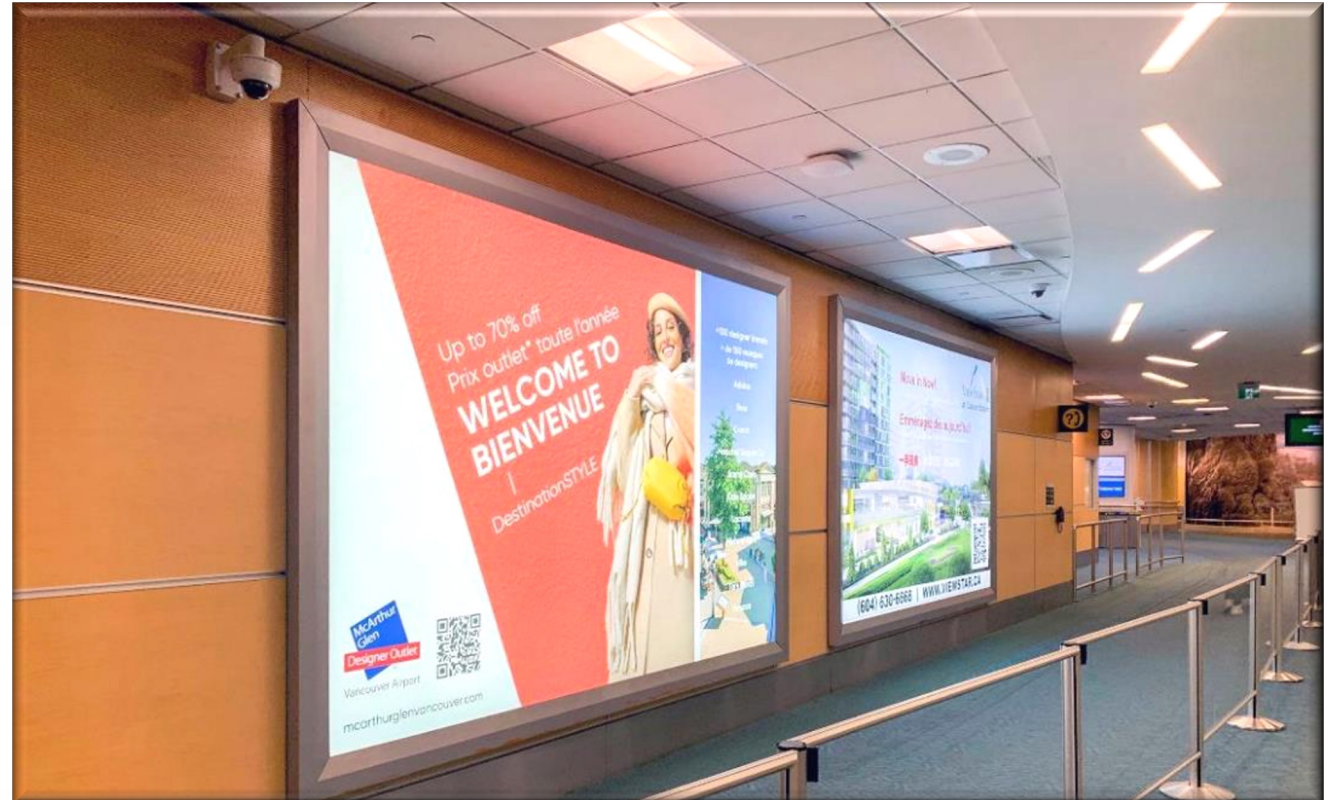
Strategically located, these Spectaculars offer a unique opportunity to capture significant attention.

All advertising creative displayed must be bilingual with English & French having equal prominence.

Panel #: VAAS0114; VAAS0115
[Spec. #: 3845]

Media Rate:
\$23,000 net / 4 weeks / panel

Est. Production/Install:
\$2,125 net / execution



SPECTACULARS: 8'h x 12'w – Arrivals: International & Transborder

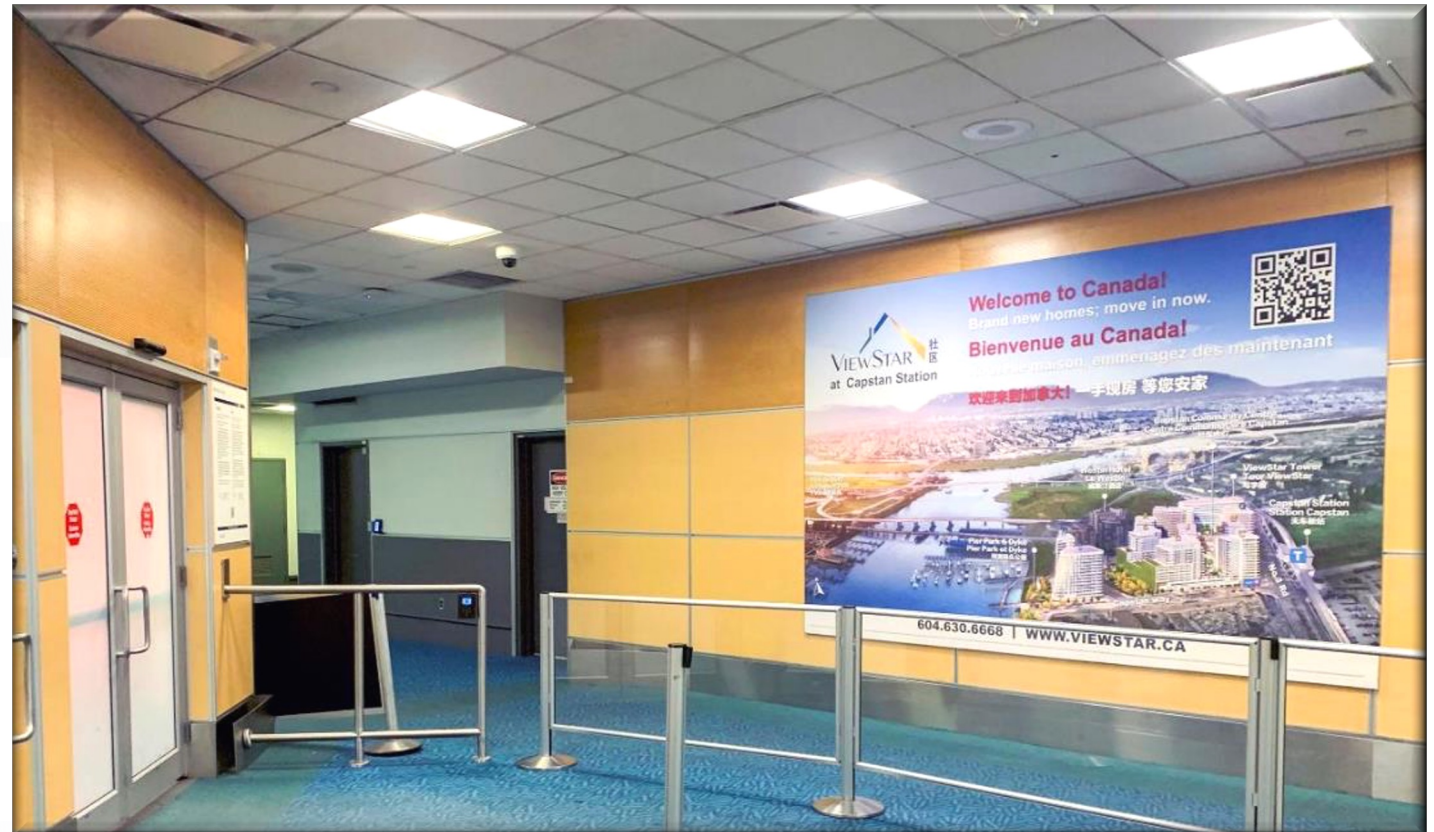
Great opportunity for unique creative execution to showcase your brand with these two murals located after Canada Customs before Meet & Greet area.

All advertising creative displayed must be bilingual with English & French having equal prominence.

Panel: #VAAAM113; VAAAM116 [Spec. #3865]

Media Rate:
\$34,000 net / 4 weeks / panel

Est. Production/Install:
\$2,210 net / execution



SPECTACULARS: 8'h x 12'w – Arrivals: International & Transborder

Strategically located, these Spectaculars offer a unique opportunity to capture significant attention.

All advertising creative displayed must be bilingual with English & French having equal prominence.

Panel #: VAAS0219; VAAS0220; VAAS0222
[Spec. #: 3865]

Media Rate:
\$28,000 net / 4 weeks /panel

Est. Production/Install:
\$TBD net / execution



GLASS WRAPS: Arrivals: International & Transborder

Great opportunity for unique creative execution to showcase your brand. These glass wraps are located in the arrivals leading to International and Transborder Customs.

All advertising creative displayed must be bilingual with English & French having equal prominence.

Media Rate:
\$44,000 net / 4 weeks /panel

Est. Production/Install:
\$3,048 net / execution



Panel: #VAAAM898 (Transborder)
[Spec. #3872] Size: 29'w x 7'h



Panel: #VAAAM899 (International)
[Spec. #3873] Size: 35'w x 7'h